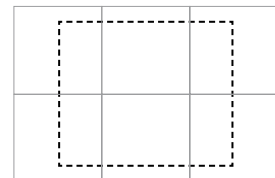


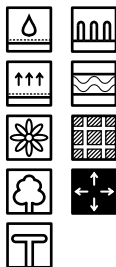
# Omni® Integrate

Approximately 6 tiles shown  
For full technical specifications see p234

Module = 457.2 x 457.2 mm  
Yarn Weight = 560 g/m<sup>2</sup>  
Pile Height = 3.3 mm  
Tuft Density = 155,000 per m<sup>2</sup>  
Total Thickness = 10.2 mm  
Total Weight = 4000 g/m<sup>2</sup>

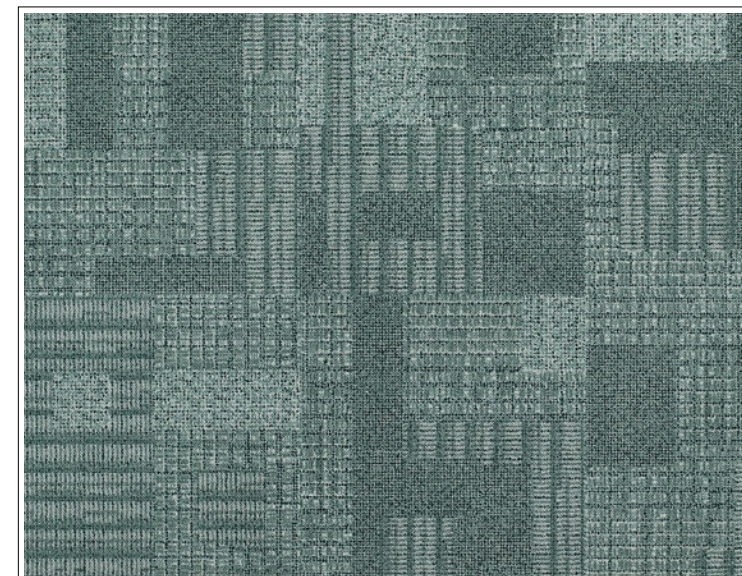


Each image shows 6 tiles with the visible area shown by the dotted line.

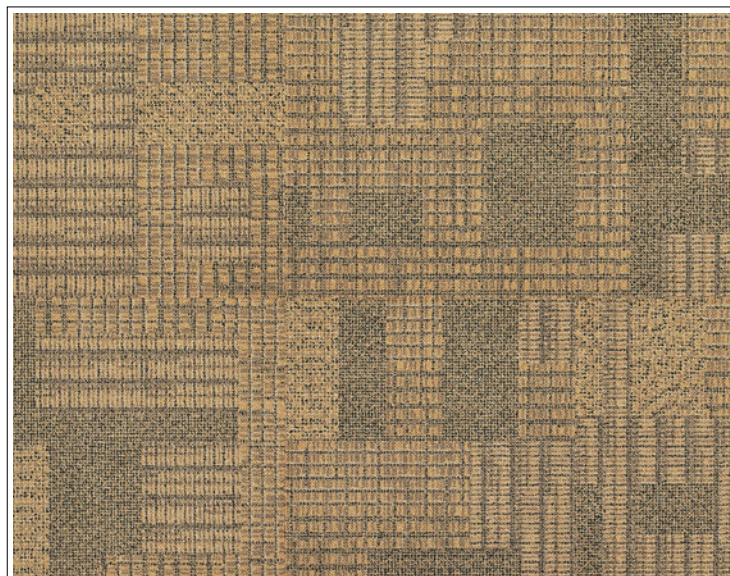


On request

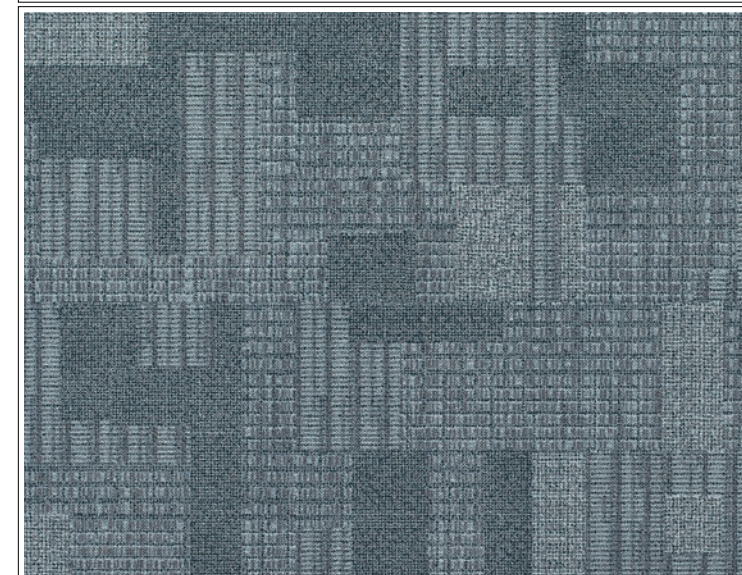
Pull out flap from back cover to see explanations of symbols



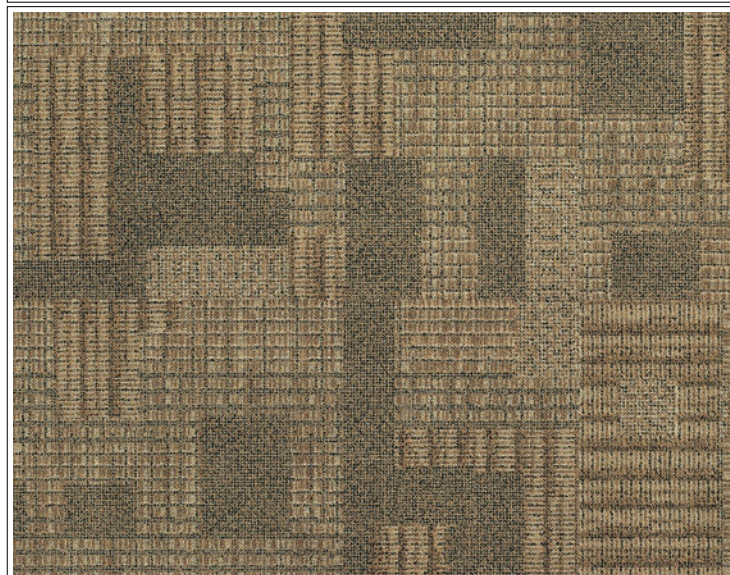
CONNECT P .1001-110



MISHMESH P .1001-117



LABYRINTH P .1001-118

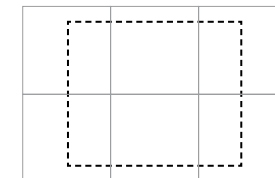


RAFT P.1001-109

# Omni® Integrate

Approximately 6 tiles shown  
For full technical specifications see p234

Module = 457.2 x 457.2 mm  
Yarn Weight = 560 g/m<sup>2</sup>  
Pile Height = 3.3 mm  
Tuft Density = 155,000 per m<sup>2</sup>  
Total Thickness = 10.2 mm  
Total Weight = 4000 g/m<sup>2</sup>

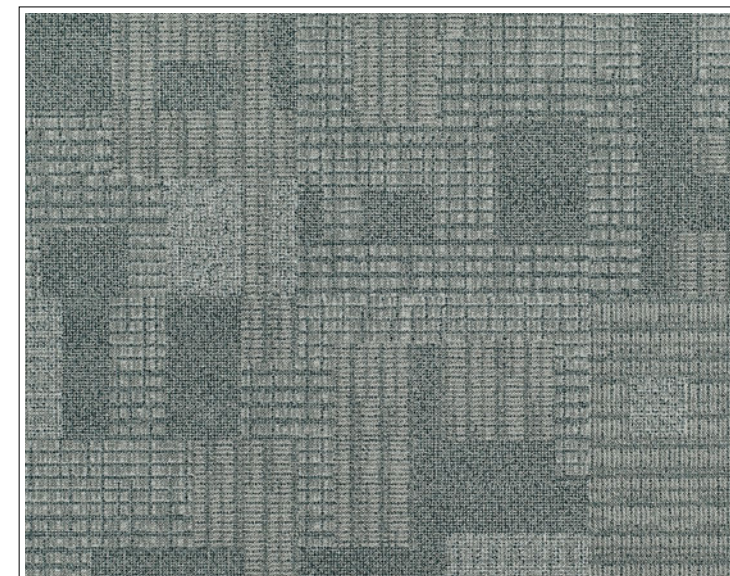


Each image shows 6 tiles with the visible area shown by the dotted line.

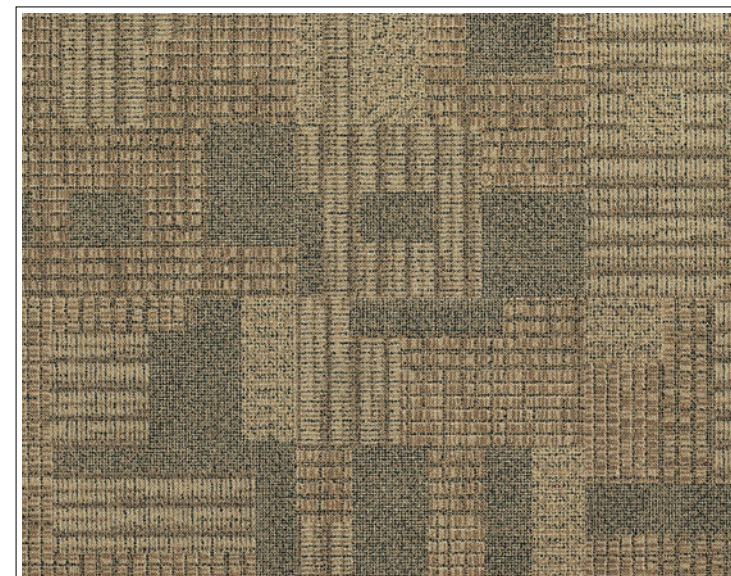


On request

Pull out flap from back cover to see explanations of symbols



SCAFFOLD P .1001-104



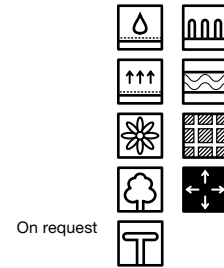
FENDER P .1001-116

## Omni® Integrate Detail

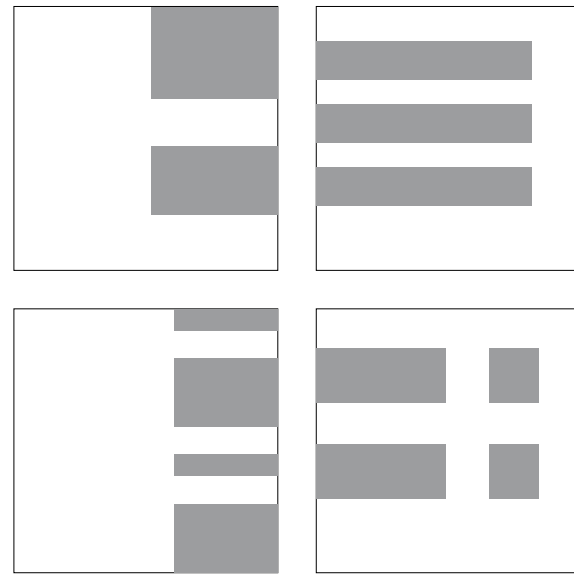
For full technical specifications see p234

Module = 457.2 x 457.2 mm  
 Yarn Weight = 560 g/m<sup>2</sup>  
 Pile Height = 3.3 mm  
 Tuft Density = 155,000 per m<sup>2</sup>  
 Total Thickness = 10.2 mm  
 Total Weight = 4000 g/m<sup>2</sup>

Pull out flap from back cover to see explanations of symbols



On request



Milliken's unique Millitron® digital colour placement gives you the flexibility to customise your Omni® Integrate design with accents of colour. This gives you the opportunity to enhance your space by customising the floor to tie in with a specific design scheme or corporate identity in a subtle yet flexible way. Omni® Detail can also be used to demarcate areas, colour code different floors within a building or, in line with DDA regulations, the concept can be used to highlight exits or access points with bright colours.

Over time, as you change the layout of your space, the random nature of the design means that you can take out and drop in the Detail tiles as and when required to meet your changing needs.

Because the Details are created during the manufacturing process, there is no need to order separate product or deal with the complication and waste involved with traditional "cut-ins" during installation.

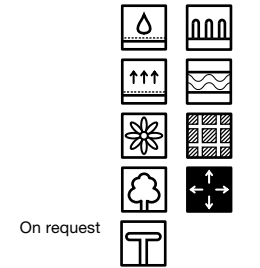
When ordering Integrate Details, you will receive a random assortment of tiles with your chosen colour details placed in the areas indicated on the left.

## Omni® Integrate Detail

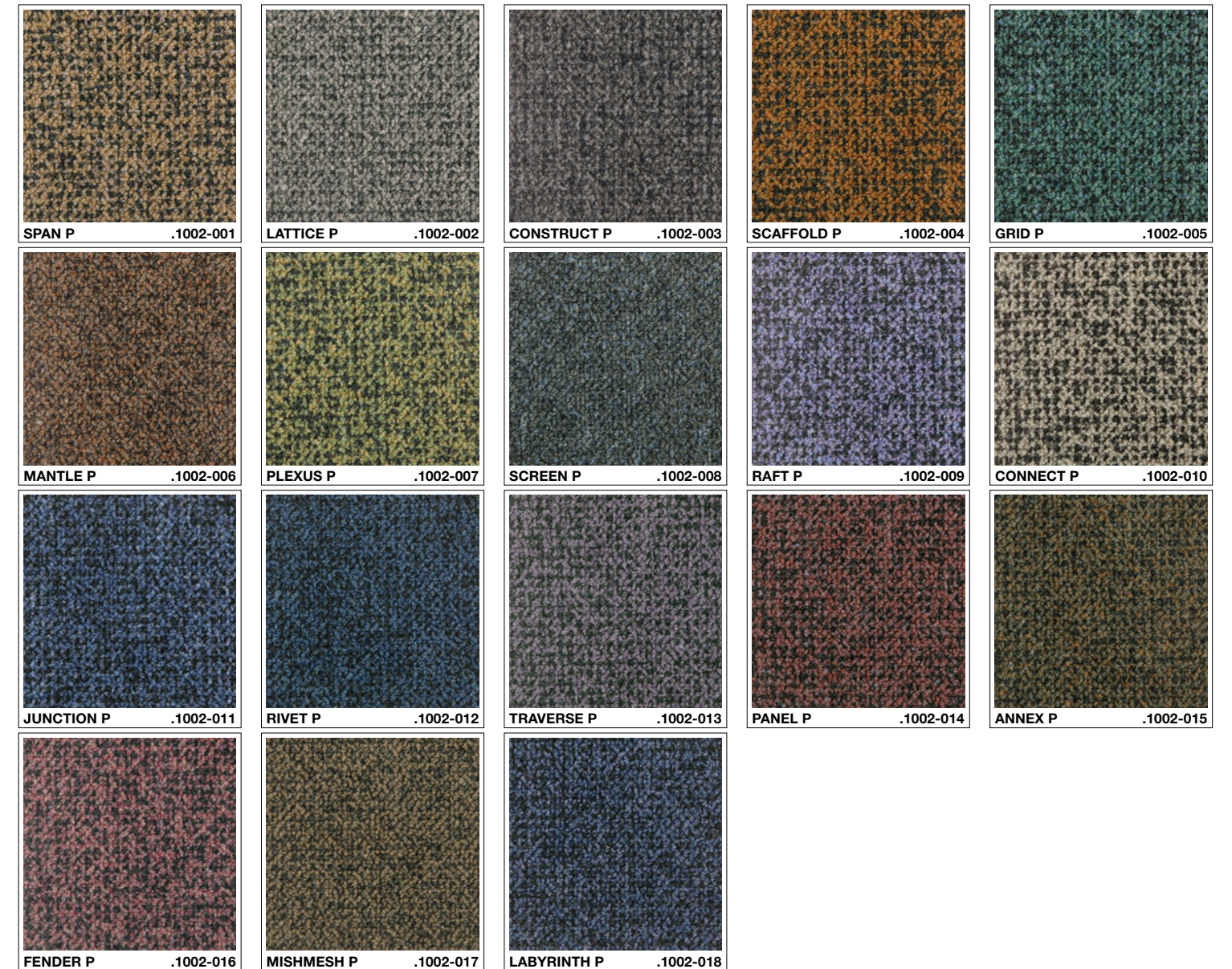
For full technical specifications see p234

Module = 457.2 x 457.2 mm  
 Yarn Weight = 560 g/m<sup>2</sup>  
 Pile Height = 3.3 mm  
 Tuft Density = 155,000 per m<sup>2</sup>  
 Total Thickness = 10.2 mm  
 Total Weight = 4000 g/m<sup>2</sup>

Pull out flap from back cover to see explanations of symbols



On request

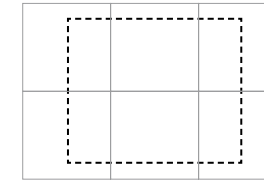




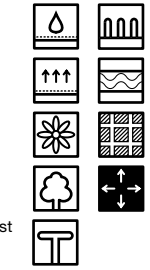
# Omni® Myriad

Approximately 6 tiles shown  
For full technical specifications see p234

Module = 457.2 x 457.2 mm  
 Yarn Weight = 560 g/m<sup>2</sup>  
 Pile Height = 3.3 mm  
 Tuft Density = 155,000 per m<sup>2</sup>  
 Total Thickness = 10.2 mm  
 Total Weight = 4000 g/m<sup>2</sup>



Each image shows 6 tiles with the visible area shown by the dotted line.



On request

Pull out flap from back cover to see explanations of symbols



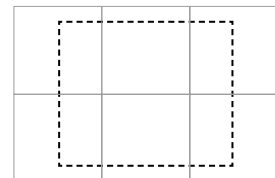
CARBON

P.1001-18

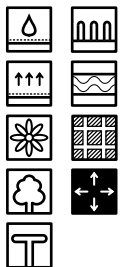
# Omni® Myriad

Approximately 6 tiles shown  
For full technical specifications see p234

Module = 457.2 x 457.2 mm  
Yarn Weight = 560 g/m<sup>2</sup>  
Pile Height = 3.3 mm  
Tuft Density = 155,000 per m<sup>2</sup>  
Total Thickness = 10.2 mm  
Total Weight = 4000 g/m<sup>2</sup>

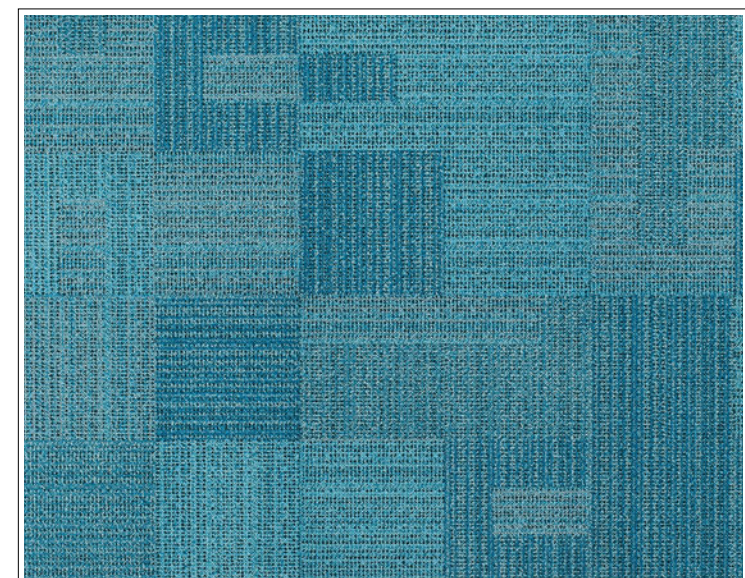


Each image shows 6 tiles with the visible area shown by the dotted line.



On request

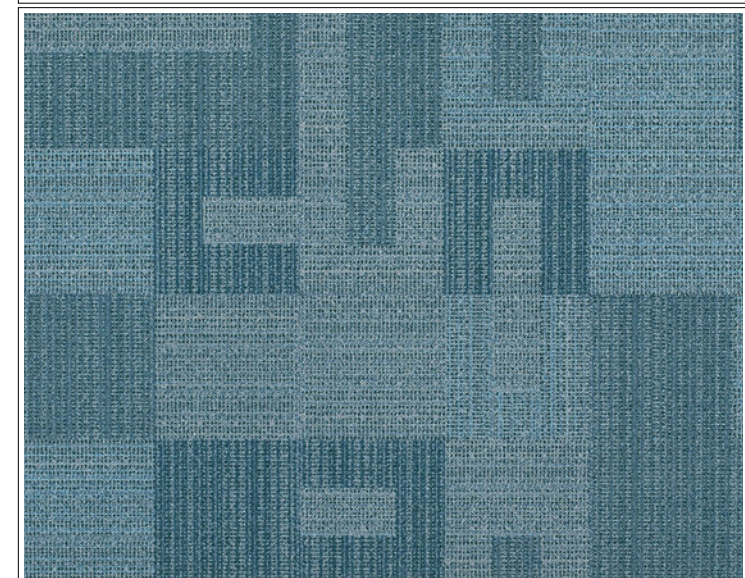
Pull out flap from back cover to see explanations of symbols



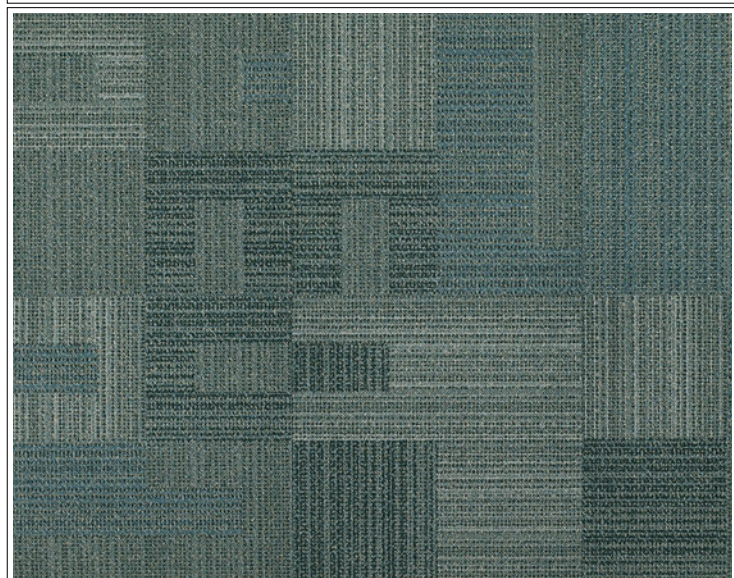
FUZE P.1001-30



ORE P.1001-34



WIRED P.1001-33

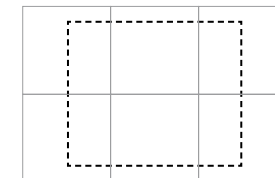


SOLDER P.1001-14

# Omni® Myriad

Approximately 6 tiles shown  
For full technical specifications see p234

Module = 457.2 x 457.2 mm  
Yarn Weight = 560 g/m<sup>2</sup>  
Pile Height = 3.3 mm  
Tuft Density = 155,000 per m<sup>2</sup>  
Total Thickness = 10.2 mm  
Total Weight = 4000 g/m<sup>2</sup>

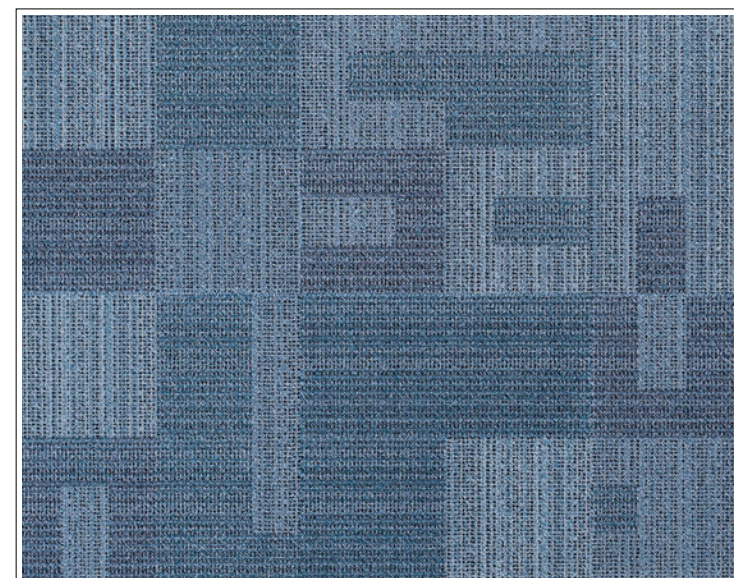


Each image shows 6 tiles with the visible area shown by the dotted line.



On request

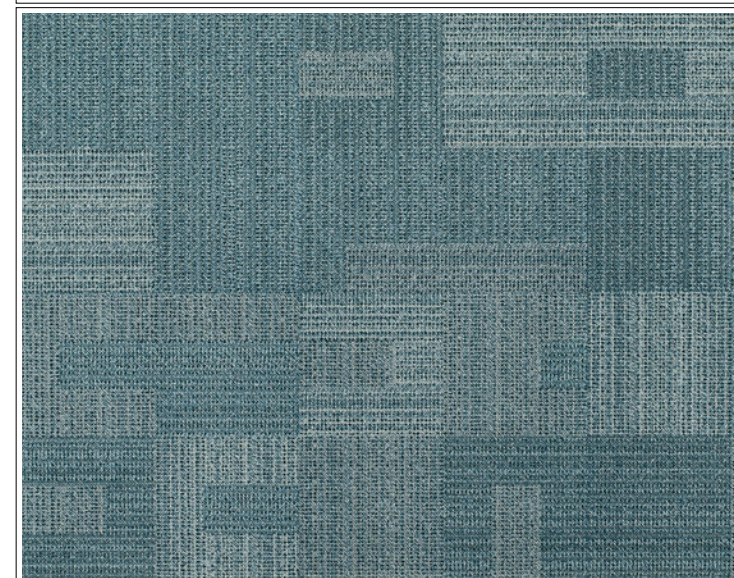
Pull out flap from back cover to see explanations of symbols



FORGE P.1001-1



POWDERCOAT P .1001-21



FLUX P.1001-23

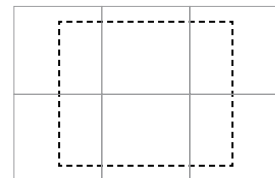


STEEL P.1001-38

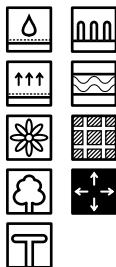
# Omni® Myriad

Approximately 6 tiles shown  
For full technical specifications see p234

Module = 457.2 x 457.2 mm  
Yarn Weight = 560 g/m<sup>2</sup>  
Pile Height = 3.3 mm  
Tuft Density = 155,000 per m<sup>2</sup>  
Total Thickness = 10.2 mm  
Total Weight = 4000 g/m<sup>2</sup>



Each image shows 6 tiles with the visible area shown by the dotted line.

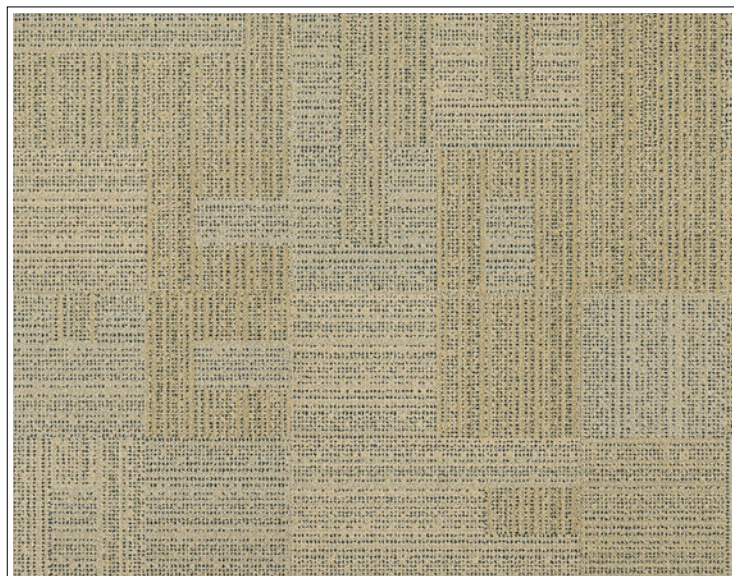


On request

Pull out flap from back cover to see explanations of symbols



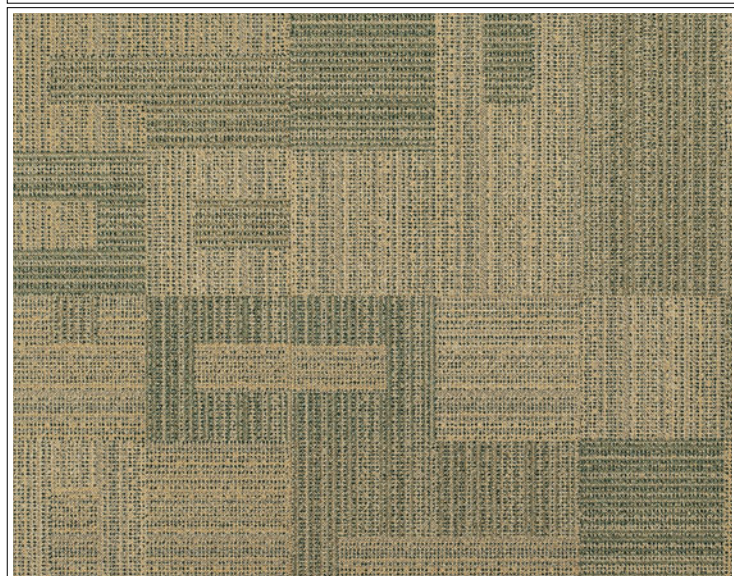
ELECTROPLATE P .1001-31



WEB P.1001-20



TUNGSTEN P .1001-11

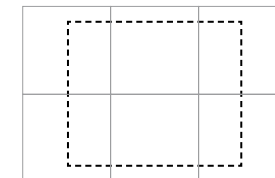


ASSAY P.1001-19

# Omni® Myriad

Approximately 6 tiles shown  
For full technical specifications see p234

Module = 457.2 x 457.2 mm  
Yarn Weight = 560 g/m<sup>2</sup>  
Pile Height = 3.3 mm  
Tuft Density = 155,000 per m<sup>2</sup>  
Total Thickness = 10.2 mm  
Total Weight = 4000 g/m<sup>2</sup>



Each image shows 6 tiles with the visible area shown by the dotted line.



On request

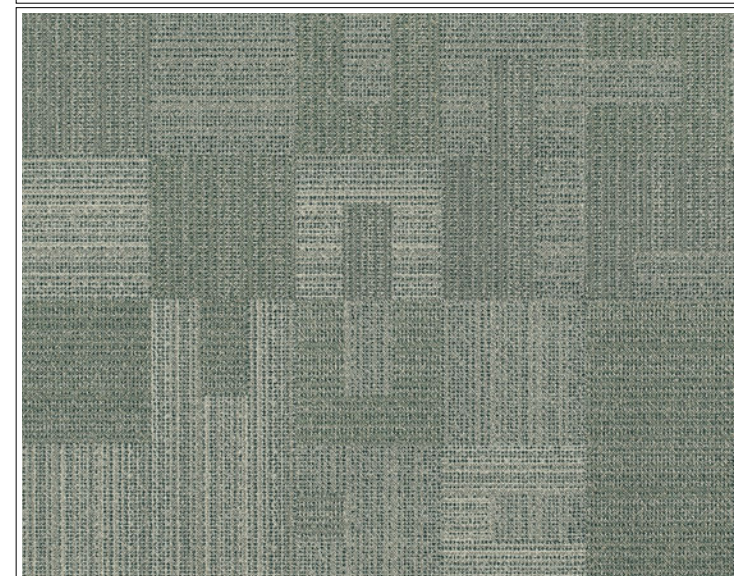
Pull out flap from back cover to see explanations of symbols



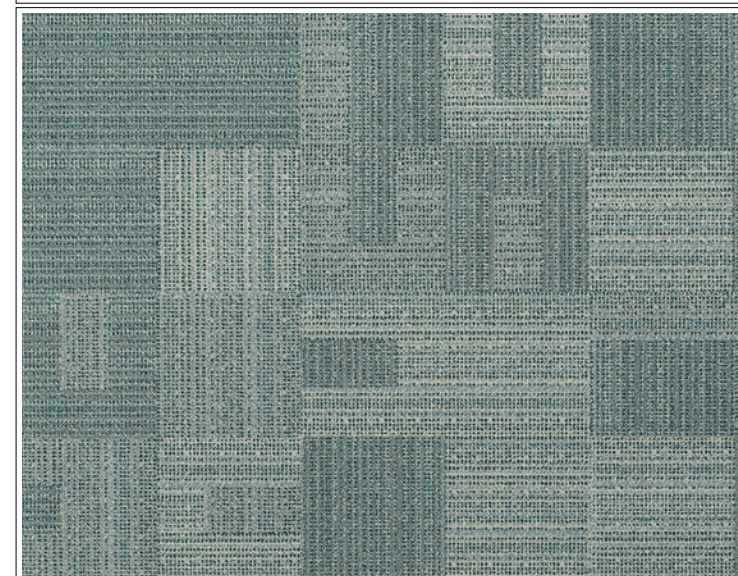
FILIGREE P .1001-28



ALLOY P.1001-3



CABLE P.1001-17

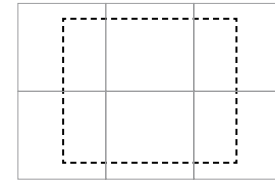


NICKEL P.1001-27

# Omni® Myriad

Approximately 6 tiles shown  
For full technical specifications see p234

Module = 457.2 x 457.2 mm  
Yarn Weight = 560 g/m<sup>2</sup>  
Pile Height = 3.3 mm  
Tuft Density = 155,000 per m<sup>2</sup>  
Total Thickness = 10.2 mm  
Total Weight = 4000 g/m<sup>2</sup>



Each image shows 6 tiles with the visible area shown by the dotted line.



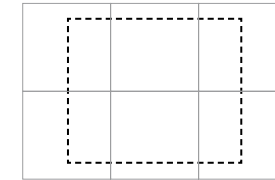
On request

Pull out flap from back cover to see explanations of symbols

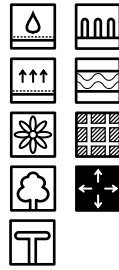
# Omni® Myriad

Approximately 6 tiles shown  
For full technical specifications see p234

Module = 457.2 x 457.2 mm  
Yarn Weight = 560 g/m<sup>2</sup>  
Pile Height = 3.3 mm  
Tuft Density = 155,000 per m<sup>2</sup>  
Total Thickness = 10.2 mm  
Total Weight = 4000 g/m<sup>2</sup>



Each image shows 6 tiles with the visible area shown by the dotted line.



On request

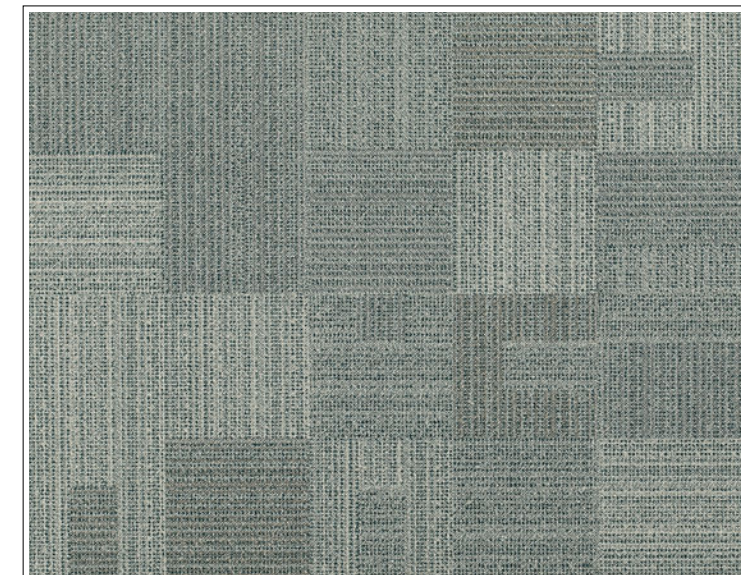
Pull out flap from back cover to see explanations of symbols



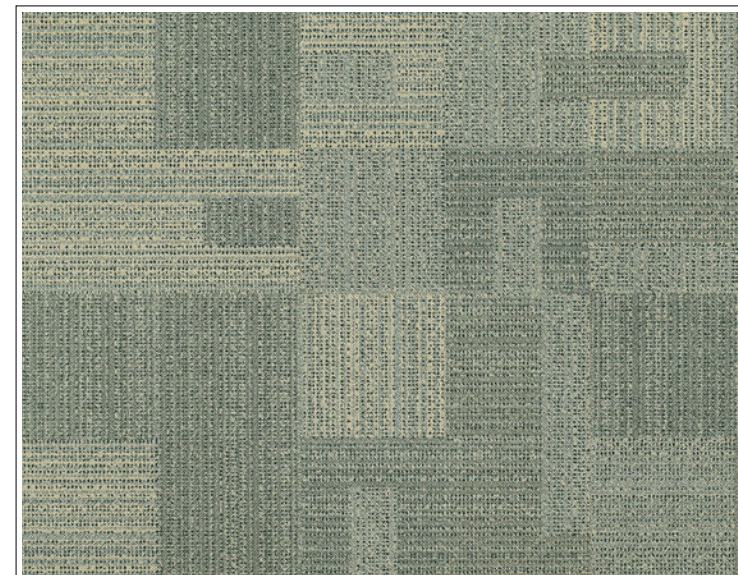
CHAINMAIL P .1001-2



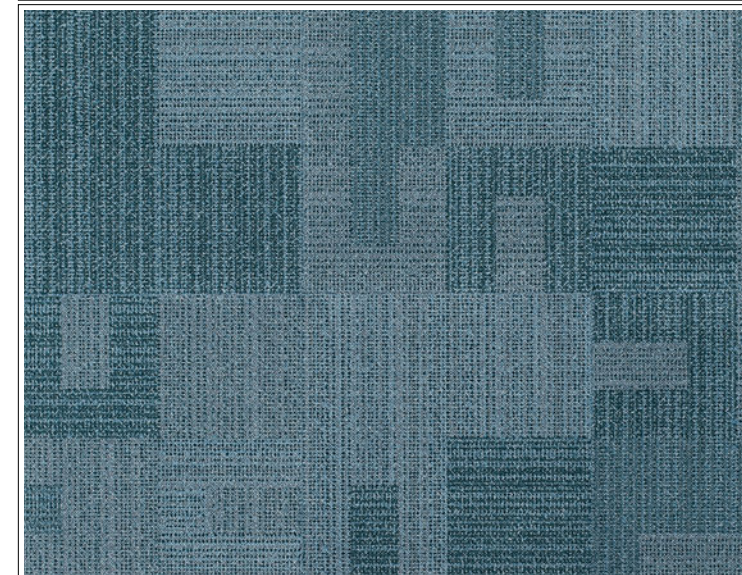
WELD P.1001-16



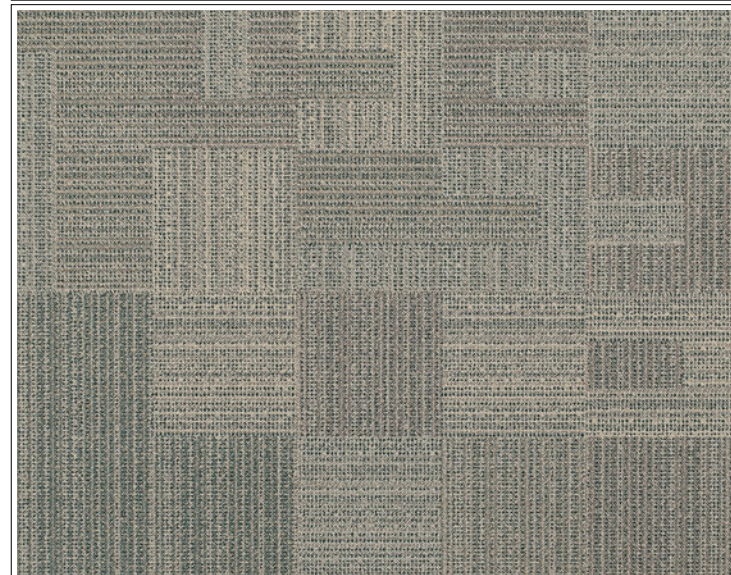
AMALGAM P .1001-26



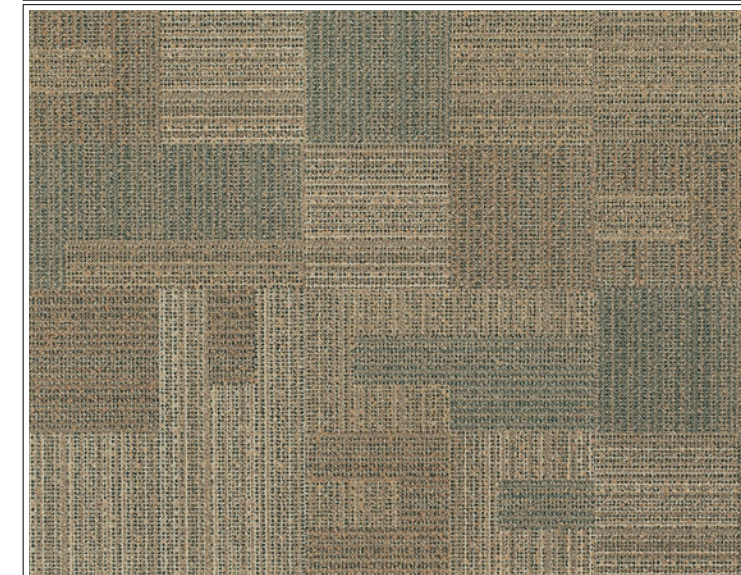
TIN P.1001-13



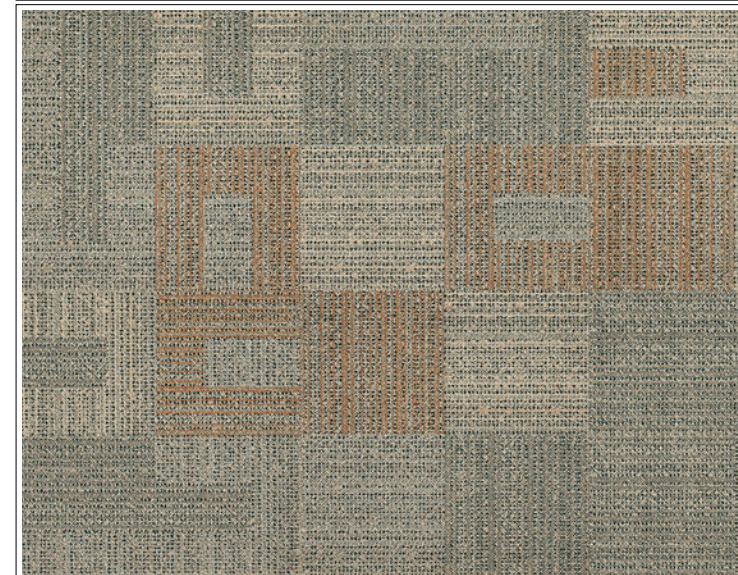
SHIMMER P .1001-36



FRET P.1001-22



FUSION P.1001-6

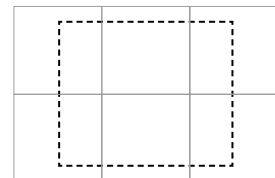


GAUZE P.1001-35

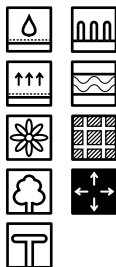
# Omni® Myriad

Approximately 6 tiles shown  
For full technical specifications see p234

Module = 457.2 x 457.2 mm  
Yarn Weight = 560 g/m<sup>2</sup>  
Pile Height = 3.3 mm  
Tuft Density = 155,000 per m<sup>2</sup>  
Total Thickness = 10.2 mm  
Total Weight = 4000 g/m<sup>2</sup>



Each image shows 6 tiles with the visible area shown by the dotted line.



On request

Pull out flap from back cover to see explanations of symbols

# Omni® Myriad Detail

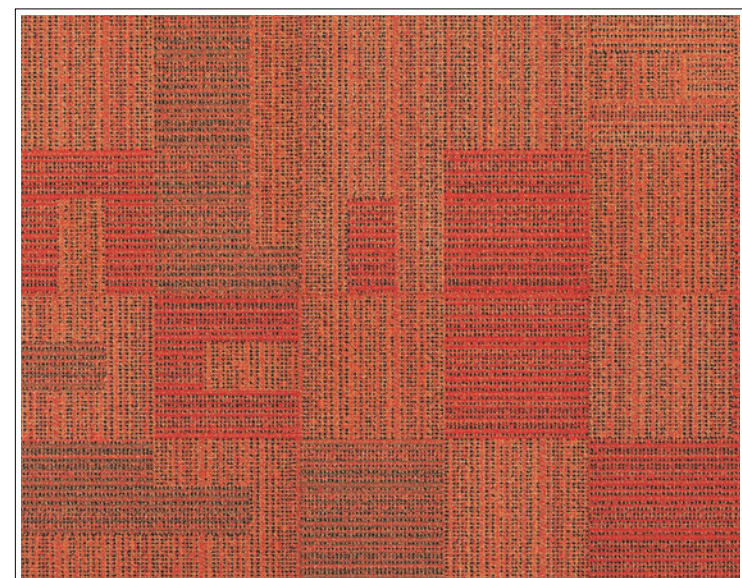
For full technical specifications see p234

Module = 457.2 x 457.2 mm  
Yarn Weight = 560 g/m<sup>2</sup>  
Pile Height = 3.3 mm  
Tuft Density = 155,000 per m<sup>2</sup>  
Total Thickness = 10.2 mm  
Total Weight = 4000 g/m<sup>2</sup>

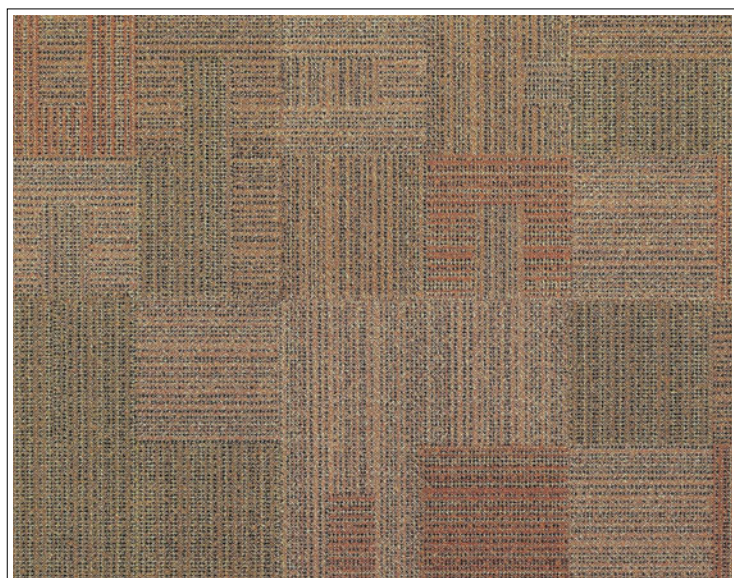
Pull out flap from back cover to see explanations of symbols



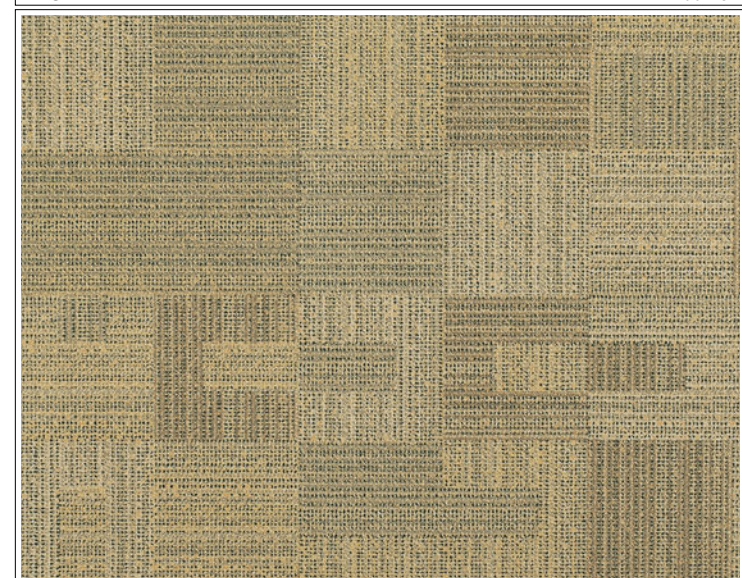
On request



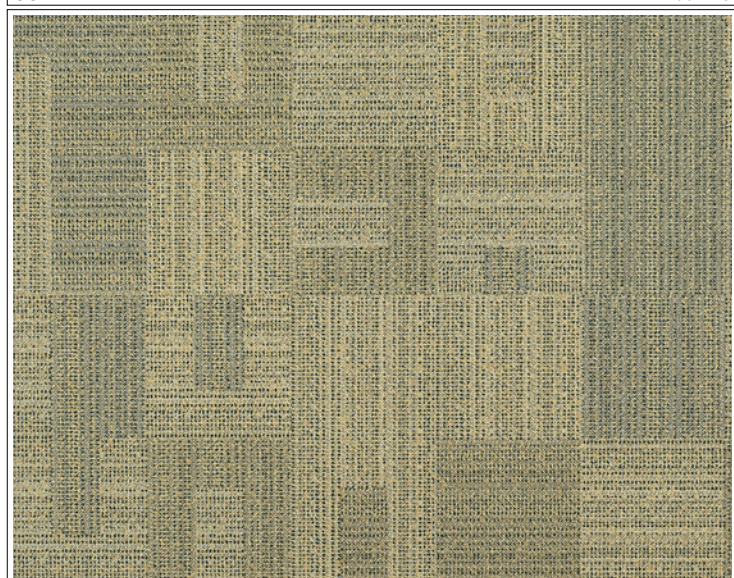
AMULET P.1001-32



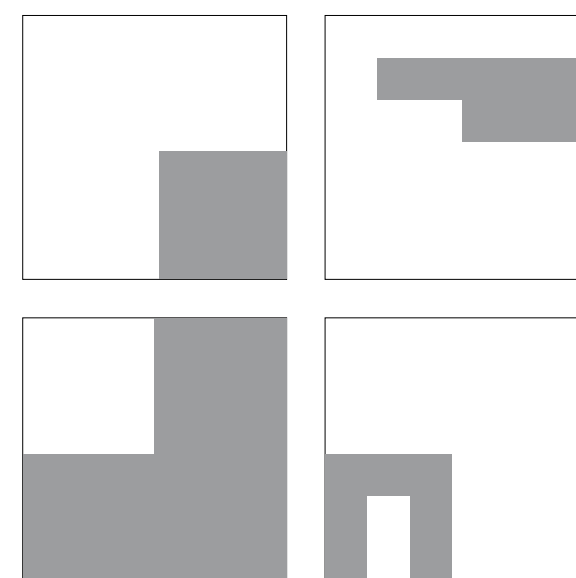
COPPERPLATE P .1001-29



INGOT P.1001-4

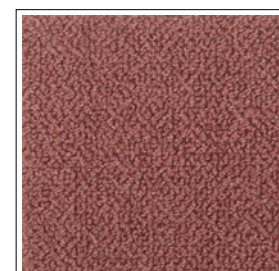
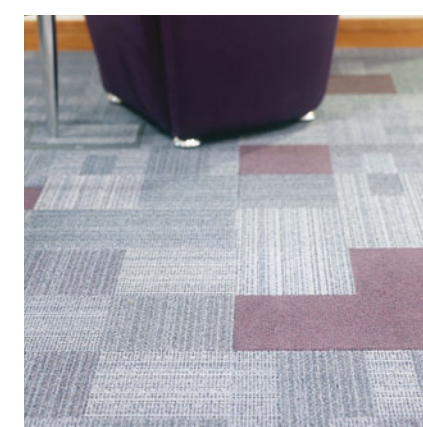


SPLICE P.1001-5

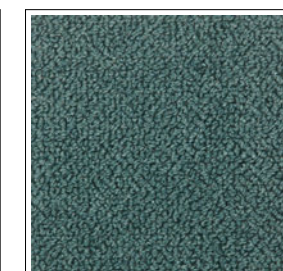


Milliken's unique Millitron® digital colour placement gives you the flexibility to customise your Omni® Myriad design with accents of colour. This gives you the opportunity to enhance your space by customising the floor to tie in with a specific design scheme or corporate identity in a subtle yet flexible way.

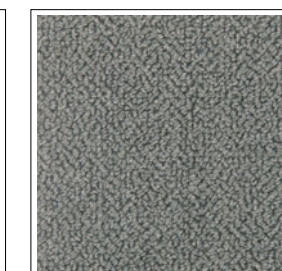
When ordering Myriad Details, you will receive a random assortment of tiles with your chosen colour details placed in the areas indicated on the left.



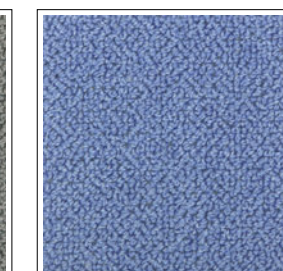
CHAINMAIL P .1002-0201



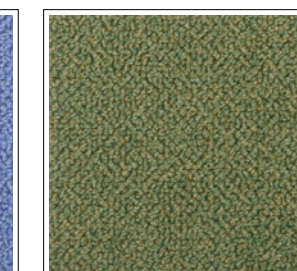
ALLOY P .1002-0301



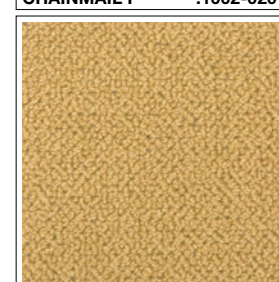
INGOT P .1002-0402



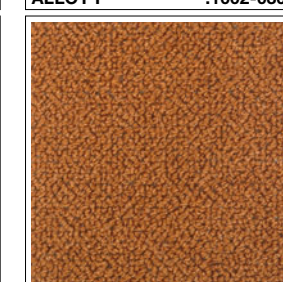
SPLICE P .1002-0507



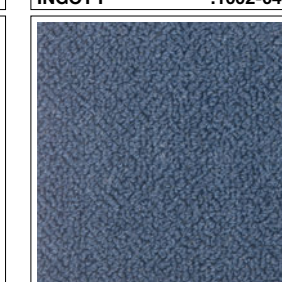
SPLICE P .1002-0510



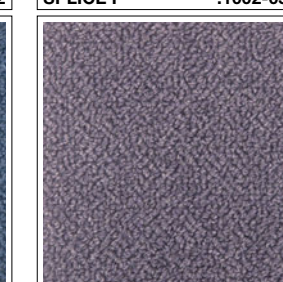
SPLICE P .1002-0511



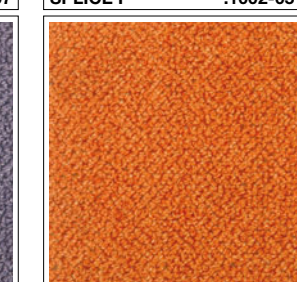
FUSION P .1002-0603



TIN P .1002-1301



FORGE P .1002-0110



ORE P.1002-3401

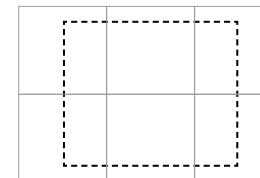


CONGRESS P.1004-202

# Omni® Syndicate

Approximately 6 tiles shown  
For full technical specifications see p233

Module = 457.2 x 457.2 mm  
Yarn Weight = 650 g/m<sup>2</sup>  
Pile Height = 3.6 mm  
Tuft Density = 96,400 per m<sup>2</sup>  
Total Thickness = 10.2 mm  
Total Weight = 4000 g/m<sup>2</sup>

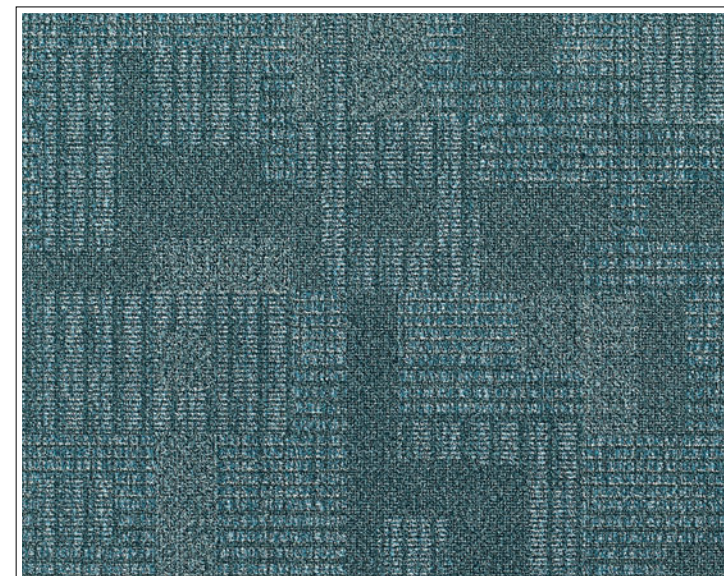


Each image shows 6 tiles with the visible area shown by the dotted line.

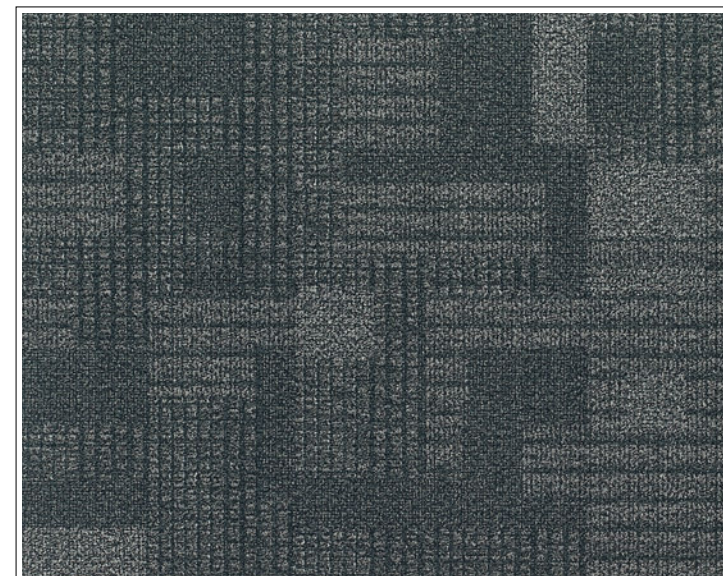
On request



Pull out flap from back cover to see explanations of symbols



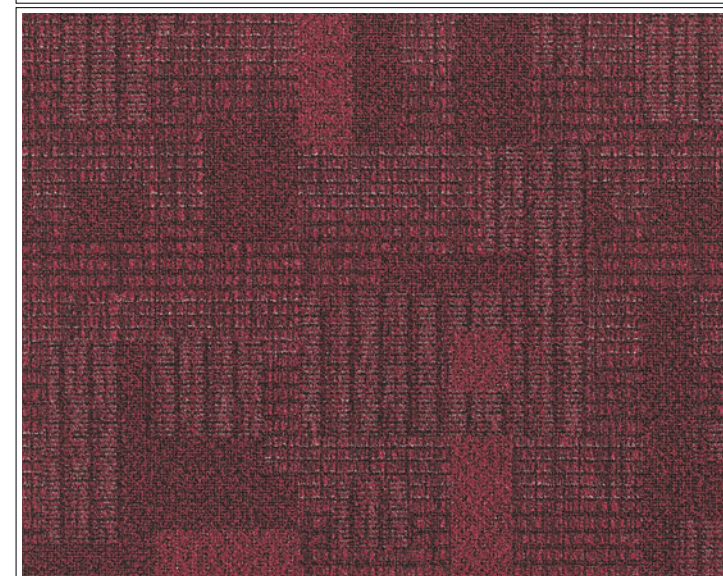
UNION P.1004-216



JET SET P.1004-219



KINDRED SPIRIT P.1004-203



RALEIGH P .1004-206